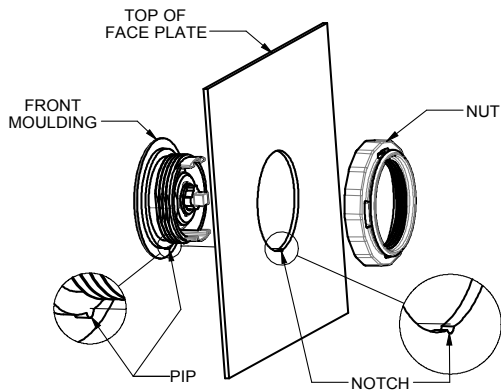
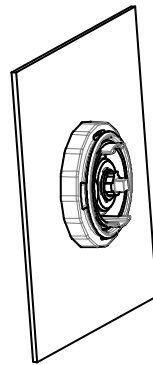


M20 Key Switch Installation Guide



ALIGN THE PIP ON THE FRONT MOULDING WITH THE NOTCH IN FACE PLATE. INSERT FRONT MOULDING INTO THE FACE PLATE ENSURING THAT THE PIP ENGAGES WITH THE NOTCH IN THE FACE PLATE

Figure 1



HAND TIGHTEN NUT

Figure 2

| A | KEY POSITION | | | |
|---------|--------------|-----|------|------|
| CONTACT | 0° | 90° | 180° | 270° |
| 1-2 | O | C | - | - |
| 3-4 | O | C | - | - |
| - | - | - | - | - |
| - | - | - | - | - |

MOVEMENT 90° ↻

| C | KEY POSITION | | | |
|---------|--------------|-----|------|------|
| CONTACT | 0° | 90° | 180° | 270° |
| 1-2 | O | C | - | - |
| 3-4 | C | O | - | - |
| 5-6 | O | C | - | - |
| 7-8 | C | O | - | - |

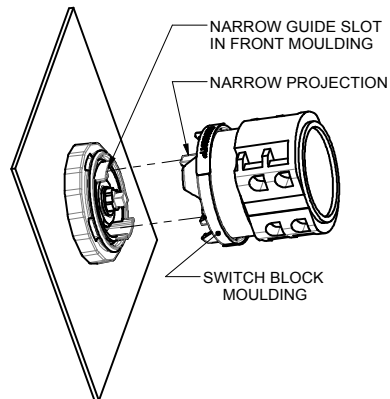
MOVEMENT 90° ↻

| P | KEY POSITION | | | |
|---------|--------------|-----|------|------|
| CONTACT | 0° | 45° | 180° | 270° |
| 1-2 | O | C | - | - |
| 3-4 | O | C | - | - |
| - | - | - | - | - |
| - | - | - | - | - |

SPRING RETURN TO 0° ↻

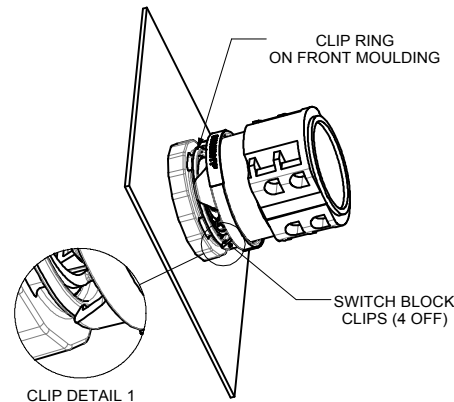
| Q | KEY POSITION | | | |
|---------|--------------|-----|------|------|
| CONTACT | 0° | 45° | 180° | 270° |
| 1-2 | O | C | - | - |
| 3-4 | C | O | - | - |
| - | - | - | - | - |
| - | - | - | - | - |

SPRING RETURN TO 0° ↻



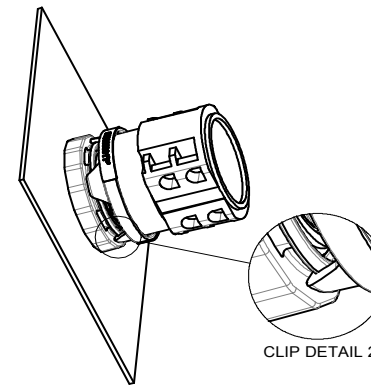
ALIGN THE WIDE AND NARROW PROJECTIONS (NARROW UPPERMOST) ON THE SWITCH BLOCK MOULDING WITH THE GUIDE SLOTS IN THE FRONT MOULDING.

Figure 3



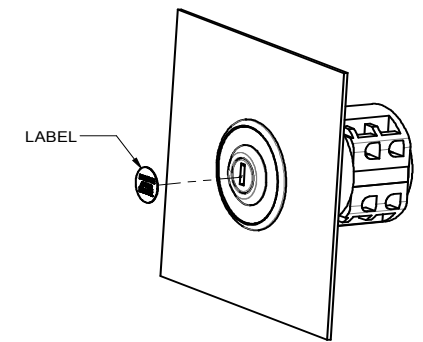
SLIDE THE SWITCH BLOCK INTO FRONT MOULDING UNTIL SWITCH BLOCK CLIPS REST AGAINST CLIP RING (SEE CLIP DETAIL 1)

Figure 4



PRESS FIRMLY ON THE REAR OF SWITCH BLOCK UNTIL ALL FOUR CLIPS ENGAGE WITH CLIP RING. SEE CLIP DETAIL 2

Figure 5



REMOVE LABEL

Figure 6